

FEATURES :

1. Mission Data

- Maritime territorial surveillance (identify illegal fishing, trafficking, illegal import) by:
 - Ship detection and tracking
 - Identifying the target (Style, Friendly, etc.)
 - Displaying, printing, and storing ship target and image data resulted from maritime patrol operation
 - Recording of data resulted maritime patrol operations
 - Displaying ship target identities (position, name, direction, speed, nationality, destination of the ships)
- Oil spill and pollution detection
- Search and Rescue (SAR)
- Sending report to KRI (warship) in real time.

2. Navigation Data

- Displaying weather radar to increase the pilot's situational awareness.
- Displaying navigation data of maritime patrol aircraft.
 - Aircraft track
 - Aircraft position (*longitude, latitude, altitude*)
 - Aircraft orientation (*yaw, pitch, roll*)
 - Waypoint
 - Flight plan
 - Airspeed
 - Waypoint distance
 - Bearing
 - Heading
 - End of route
- Computing OAT (*Outside Air Temperature*)

3. Flight Management System

- Equipped with CDU, TMS allows pilot and operator to conduct:
- Alignment
 - Mission data entry (*waypoint and flight plan*)
 - Modify *flight plan* and *waypoint*
 - Copying mission data through *flash storage*

4. Tactical Data Link

- Two way information exchange with higher echelon and KRI (warship), supported information exchange data:
- Ship target image
 - Ship identity (position, name, direction, velocity, nationality, destination)

5. Recording Data

- Capable to export target image and report to USB storage.
- Equipped with DVR unit for maritime patrol operation video recording.

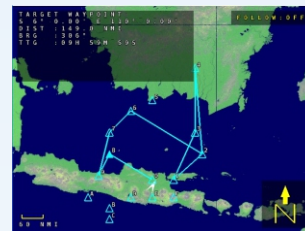
OFFICE:

Jl. Sriwijaya 36 Surabaya, Indonesia 60265.
 Phone.: +62 31-5661802 / 5661803
 Fax.: +62 31-5661990
 Mobile : +62 852 3191 4282
 E-mail : marketing@infoglobal.co.id
 www.infoglobal.co.id

TMS
Tactical Mission System



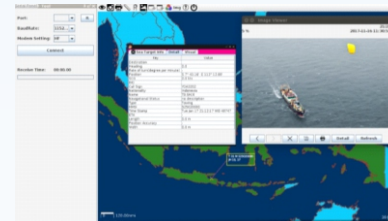
Mission Data



Navigation Data



Flight Management System



Tactical Data Link



Data Recording

TMS
Tactical Mission System
For Maritime Patrol Aircraft

Made In Indonesia



A Maritime Patrol Aircraft (MPA) equipment consists of Mission Computer that integrate sensors such as search radar, FLIR, AIS, avionics or aircraft navigation systems to detect and identify surface target that violate the territorial.

It is equipped with data link to transmit the maritime surveillance operation results from the aircraft to warship or Command & Control Center in a real time.

TMS has passed airworthiness certification by IDAA (Indonesian Defence Airworthiness Authority) of Ministry of Defence of the Republic of Indonesia.

BENEFIT

- Maritime Patrol and Surveillance
- Oil spill and pollution detection, monitoring and classification
- Search and Rescue (SAR)
- ZEE protection
- Border patrol
- Ship traffic Monitoring
- Weather radar display
- Navigation data



Sensor



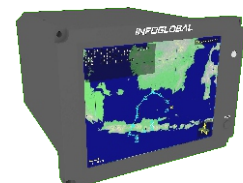
Avionics

AVIONICS AND DATA LINK TACTICAL MISSION SYSTEM



MISSION COMPUTER

An instrument serves to integrates sensors (Search Radar, AIS, EO/IR, handheld camera and all avionics of Tactical Mission System.



PILOT DISPLAY UNIT (PDU)

An avionics instrument to display the the position of ship targets detected by Search Radar and AIS, SAR routes. It also displays weather radar.



LINK-RI

A radio-based communication system to transmit and receive maritime patrol data and images from Maritime Patrol Aircraft to KRI/ground station or vice-versa in real time.



INERTIAL REFERENCE SYSTEM/GLOBAL POSITIONING SYSTEM (IRS/GPS)

An inertial-based navigation system backed-up with GPS to calculate the position and attitude of aircraft accurately and resistant to jamming and weather conditions.



CONTROL DISPLAY UNIT (CDU)

An avionics instrument to control IRS/GPS (Inertial Reference System/ Global Positioning System) in alignment process, maintain waypoint, flight plan and display navigation data in real time.



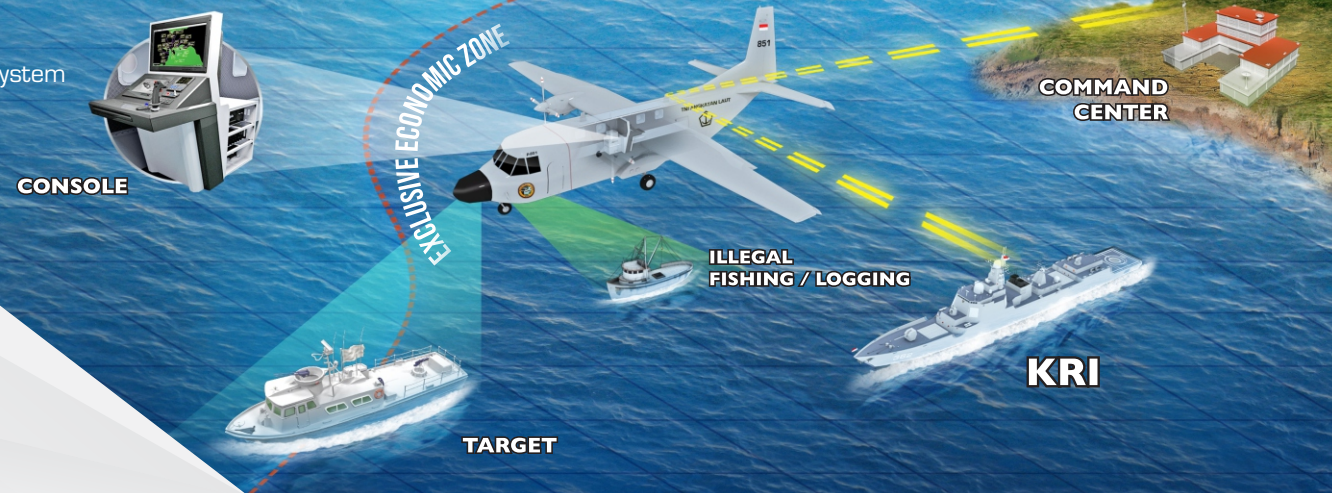
AUTOMATIC IDENTIFICATION SYSTEM (AIS)

An avionics instrument to detect and identify ship target



DIGITAL VIDEO MIXER (DVM)

An avionics instrument to process videos sourced from Search Radar, EO/IR, and Mission Computer into an integrated video.



AIR DATA UNIT (ADU)

An avionics instrument to generate altitude and airspeed data accurately.



CONTROL CENTRAL PROCESSING UNIT (CCPU)

An avionics instrument to control IRS/GPS (Inertial Reference System/ Global Positioning System) in alignment process, maintain waypoint, flight plan and display navigation data in real time.



PILOT DISPLAY CONTROL UNIT (PDCU)

An avionics instrument to control PDU display, such as selecting display screen of Search Radar or Weather Radar.



DIGITAL VIDEO RECORDER (DVR)

An avionics instrument to record video of maritime patrol operations sourced from DVM includes video from EO/IR, Mission Computer and Search Radar.



MISSION POWER SYSTEM (MPS)

An electrical system used as power supplies for all Tactical Mission System devices.



RUGGED SWITCH

An instrument consists of 12 port Ethernet switches, used to distribute data in Tactical Mission System.

